

# GOVERNOR'S WORKFORCE INVESTMENT BOARD

MARTIN G. KNOTT, JR., CHAIR

RONALD R. PETERSON, VICE CHAIR

KELLY M. SCHULZ, SECRETARY, DEPARTMENT OF LABOR, LICENSING AND REGULATION (DLLR)



## Governing Legislation

2

- ▶ Workforce Investment Act of 1998 (WIA)
  - ▶ Section 101. | State Workforce Development Boards
    - ▶ "The **Governor of a State shall establish a State workforce development board ...**"
  - ▶ Functions
    - ▶ "**to assist the Governor** in development, implementation and modification of a **State plan**; review of **statewide policies ... programs**, and of recommendations on actions that should be taken by the State to **align workforce development** programs in the State in a manner that supports a **comprehensive and streamlined workforce development** in the State ... development and **continuous improvement** of the workforce development system in the State; development and updating of comprehensive State performance **accountability measures**; the identification and dissemination of **best practices**; and the development and review of **statewide policies affecting** the coordinated provision of services through the State's **one-stop delivery system**; development of strategies for **technological improvements** to facilitate access to, and improve the quality of, services and activities ... the development of **allocation formulas** for distribution of funds for employment and training activities ..."

# Governing Legislation

3

- ▶ Workforce Innovation and Opportunity Act (WIOA)
  - ▶ Signed into Law July, 22, 2014, to be implemented **July 1, 2015**
    - ▶ Section 101. | State Workforce Development Boards
      - ▶ "The **Governor of a State shall establish a State workforce development board ...**"
    - ▶ Functions
      - ▶ "**to assist the Governor** in development, implementation and modification of a **State plan**; review of **statewide policies ... programs**, and of recommendations on actions that should be taken by the State to **align workforce development** programs in the State in a manner that supports a **comprehensive and streamlined workforce development** in the State ... development and **continuous improvement** of the workforce development system in the State; development and updating of comprehensive State **performance accountability measures**; the identification and dissemination of **best practices**; and the development and review of **statewide policies** affecting the coordinated provision of services through the State's **one-stop delivery system**; development of strategies for **technological improvements** to facilitate access to, and improve the quality of, services and activities ... the development of allocation formulas for distribution of funds for employment and training activities ..."
  - ▶ Gubernatorial Authority and Latitude

# Governing Legislation

4

- ▶ Executive Order 01.01.2004.60
  - ▶ **Advance the Governor's workforce policies**, legislative goals and priorities in the State of Maryland.
  - ▶ **Provide advice** to the Governor, Secretary, members of the Board, and other policymakers **on the implications of workforce policy** at state, local, and individual customer levels in the State of Maryland, with **significant guidance from the business community**.
  - ▶ **Promote, and ensure coordination** of, **private-sector involvement** in the workforce system.
  - ▶ **Develop and disseminate evidence-based policies and information** that contribute to a high-quality, job-driven, innovative, proactive and collaborative workforce system, that is linked to economic development and labor market opportunities.
  - ▶ Establish and maintain an **accountability system** that measures results of the programs administered by the State and local agencies.
  - ▶ Develop a plan for Maryland's workforce system that **sets clear goals and unifies various parts of the system** including economic development and education.

## OVERVIEW

5

- ▶ **Policy Board**

The GWIB does not operate programs, but rather serves as the advisory board for the Governor on workforce matters, and supports the development of Maryland's workforce system.

- ▶ **Business Leadership\***

- ▶ **Additional Board Composition:**



## Committee Structure

6

- ▶ **Executive Committee.**

The Executive Committee is comprised of seven GWIB Board members, including the Secretary of the Department of Labor, Licensing and Regulation (DLLR). The Executive Committee meets the month before the full Board Meeting via conference call.

- ▶ **InterAgency Workforce Committee.**

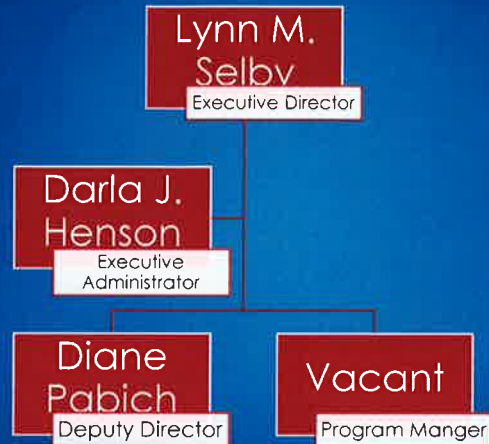
The InterAgency Workforce Committee is comprised of senior officials from its partner agencies including DLLR, DBED, DHCD, DJS, DPSCS, MDoA, MHEC, and MSDE. The InterAgency Workforce Committee meets monthly in the offices of the GWIB.

- ▶ **Policy Committee.**

The Policy Committee is comprised of staff from the GWIB and DLLR's Division of Workforce Development and Adult Learning (DWDAL). The Committee's charge is to assess, develop, approve, disseminate and evaluate policies and procedures governing the delivery of Maryland's workforce system activities mandated under WIA and WIOA.

## Organizational Structure

7



## MISSION & VISION

7

### Mission

To guide a nationally-recognized workforce development system that aligns with the economic and educational goals of the State of Maryland and will result in a qualified workforce available to employers across the State.

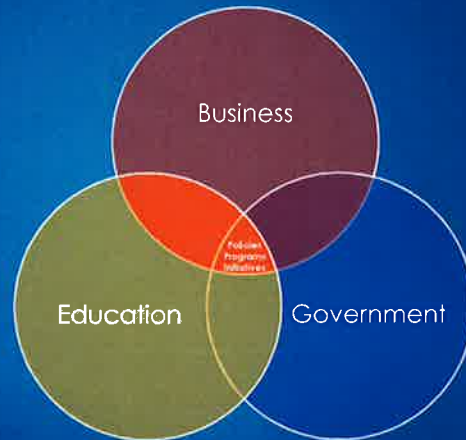
### Vision

A Maryland where every person maximizes his or her career potential and employers have access to the human resources they need to be successful.

## Job-Driven | Supply-Focused

8

- ▶ Promote collaboration and convene stakeholders;
- ▶ Identify core issues;
- ▶ Promote and share innovative strategies;
- ▶ Propose and advance workable solutions; and
- ▶ Advocate for solutions.



## Current Priorities

9

- ▶ WIOA Implementation
  - ▶ State Board Composition
  - ▶ State Board WIOA Transition Plan
  - ▶ Local Board Certification
  - ▶ Local Board Initial Designation
- ▶ National Skills Coalition State Workforce Education Alignment Project (SWEAP) Project
- ▶ U.S. Department of Labor Employment and Training Administration (DOLETA) Apprenticeship Funding Opportunity
  - ▶ Identifying and Convening Employer Partners
- ▶ SNAP E & T Quarterly Meetings/Calls
- ▶ Workforce Intermediaries, Strategic Industry Partnerships (Sector Strategy Initiatives)

Questions?